

INSTALLATION GUIDE



AQUA
FENCE
CLÔTURES DE PISCINE



**AQUA
FENCE**
CLÔTURES DE PISCINE

ESTIMATING HOW MANY PANELS OF FENCE TO INSTALL

The first thing you need to do is define a starting and an ending point.

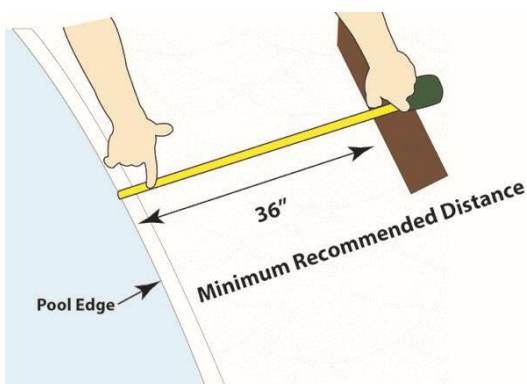
TOOLS REQUIRED

1. Tape measure or rolling measuring wheel
2. Core drill and **1 1/4" diamond drill bit** (if installing on concrete or paving stones)
3. Drill and **1 1/4" wood drill bit** (if the installation is on wood or composite)
4. Bubble level
5. Electrical extension
6. Utility knife preferably with a new blade (Cutter)
7. 5/32" metal drill bit
8. Hose
9. Rubber sledgehammer
10. Lead pencil/chalk



AQUAFENCE = Diamond core drill bit 1 1/4"

NOTE: Confirm the distance between the fence and the water line with your municipality. You need enough space to clean your pool, for people to pass through and for children to have fun.



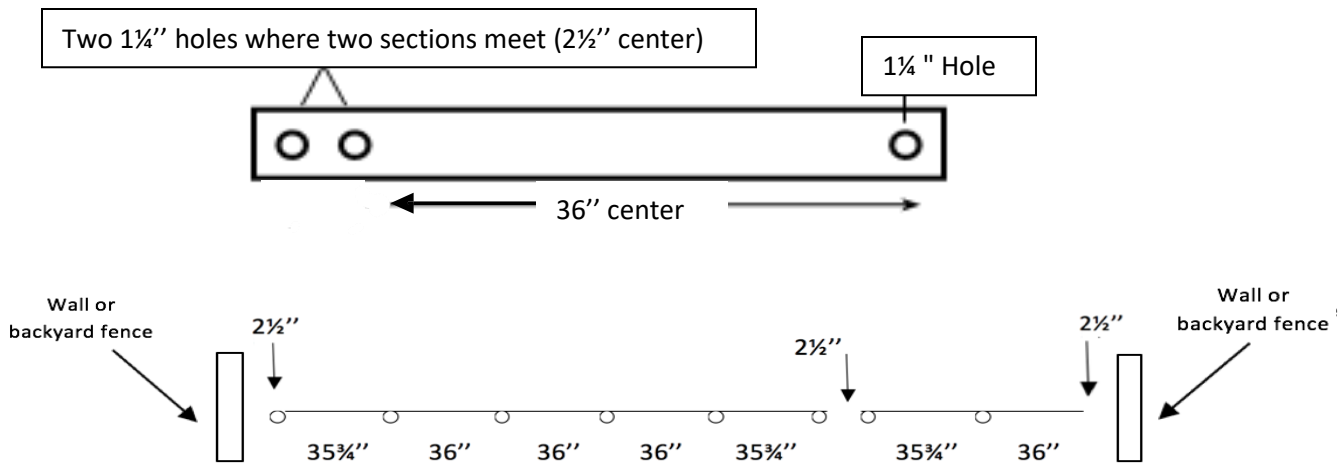
CORE DRILL : (Choice #1)

- This type of drill uses a water-cooled, diamond tipped, bit that cuts a clean precise hole.

HAMMER DRILL :

- This type of drill uses a masonry bit. The hole is not as clean and precise. A double drilling procedure is recommended (But not required) The hole is less precise to obtain 1 1/4".

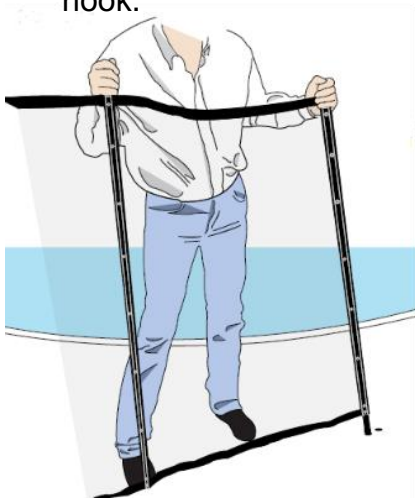
MAKING A MEASUREMENT TEMPLATE *(For purchase, available on our website)*



LAYING OUT YOUR JOB

Laying out the job will be easy to accomplish if you follow these guidelines:

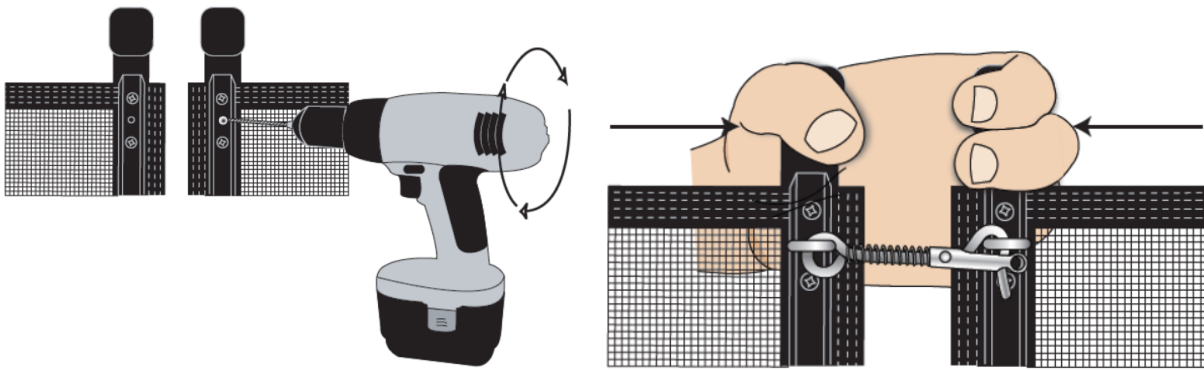
- A core drill and a **1 1/4" diamond core bit size** (if the installation is on concrete or paving stone).
- Use a **5/32" metal bit** size to make a hole in the top of the post for installing the hook.



DETERMINE GATE LOCATION

We recommend starting by positioning the gate and then installing the fence. Make sure that the screws on the posts are on the outside of the pool, as in the picture.

The fence is delivered in pre-assembled section of 15 linear feet of a height of 48" or 60". Each 15' section has six posts, one every 3 feet (36"). The measurements are taken from center to center of each post. Except for the first and the last posts at 35 3/4" (*view template*).



Remember that each section of fence (15') is connected together. Between the 2 sections, leave a space of 2½" between the 2 posts to install the hook (*center/center of the hole*). Both ends of the fence must be attached to a wall, a fence or any solid support, so that the fence is under tension. (*View template*). If you do not have a safe and solid surface, you can use the **term post** so the fence is under tension.

MEASUREMENTS

Mark the boundary of the fence on sidewalk or patio around the pool, indicate the exact position where the holes are to be made (**36" center**) with a pencil or a chalk. Remember to leave a space of 2½" center between 2 sections. Then, continue marking your holes at every 36" center.

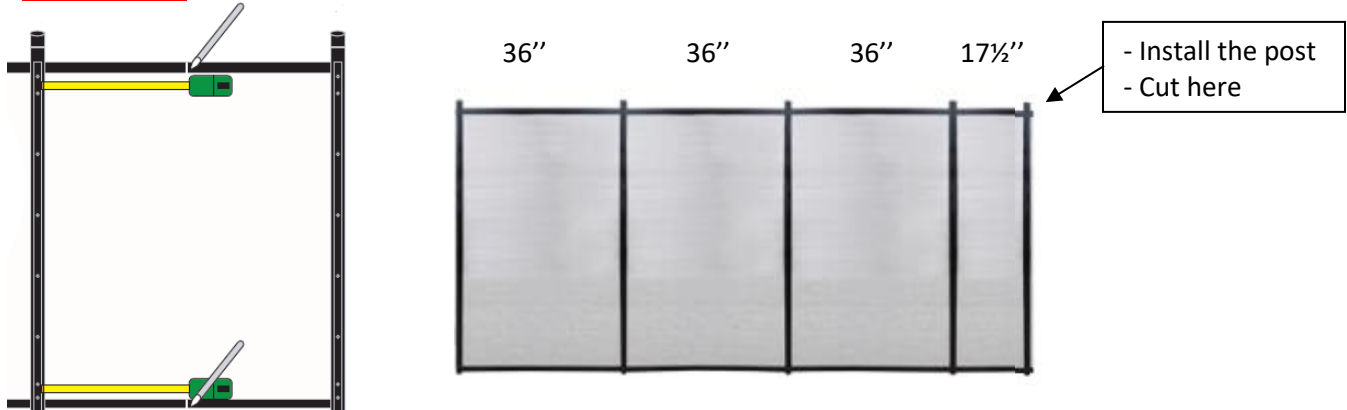
INSTALLATION PROCESS

- Determine gate location.
- Mark the surface with a template or a tape measure. When marking the holes in the surface, is to think in term of "center to center".
- Drill the holes. (*The hole sizes 1¼"*)
- Drill Type: Core drill (***HILTI DD150***)
- Evaluate the drilling angle: Straight, Outside curves, inside curves.
- Cut the holes: Drill a hole, at the proper angle, into the concrete at each location you marked on the surface.
- Remove the concrete cores.
- Install the deck sleeves.
- Install the gate.
- Install the sections.
- Connect the latches between the sections.
- Adjust the gate latch and hinges.

MODIFYING A SECTION

- Drill your last hole and install the anchor.
- Install your last post in the anchor, attach it with the hook on a solid surface.
- Unscrew the screws on the aluminium rail on the post.
- Pull the mesh so that it is taut and reinstall the aluminium rail with the screws.
- When it is all fixed, cut the extra mesh with a sharp blade (Cutter).

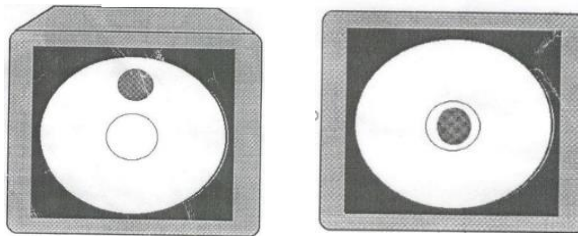
EXAMPLE:



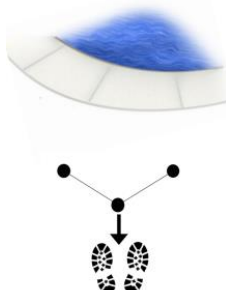
LEANING POSTS:

Remember that the bubble of your drill level must be on the opposite direction of your lean. If you want to drill in the other direction of the pool, the bubble in the level should be towards the pool. (Holes towards the pool = bubble in the opposite direction).

To help you, when you drill with an angle, the drill should be placed to show the bubble in level is not centered.

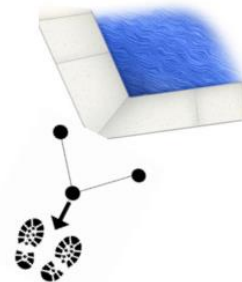


For a 45° angle (Drilled at 5° outside)



This information is only indicative

For a 90° angle (Drilled at 10° outside)



This information is only indicative

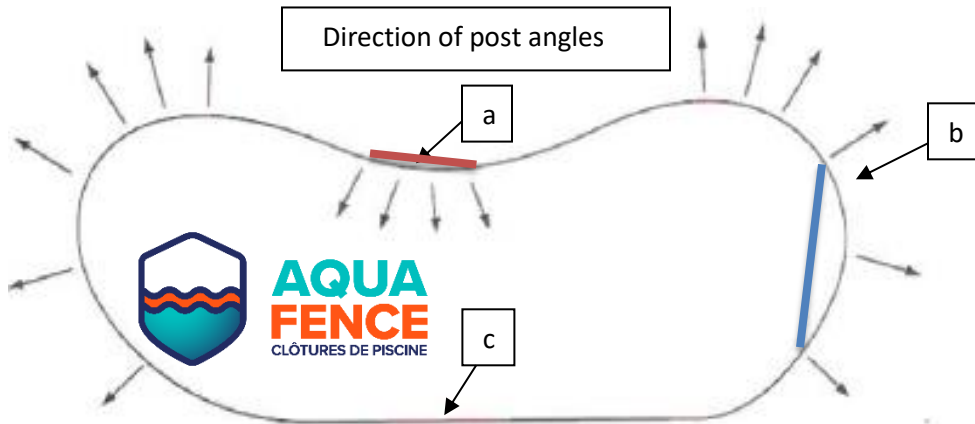
Which way to lean?

- Draw an imaginary line from the hole to the hole after the one you want to drill
- Lean the hole in the direction of the side that it falls on with respect to the line

Designated holes *a* = lean toward pool

Designated holes *b* = lean away from the pool

Designated holes *c* = no lean



The holes on a line are made perfectly vertical. Use a level on the top for more accuracy. To lean the post, you must make the hole at a certain angle.

To determine if a hole must be done with or without an angle, observe the hole you just made and the one to be done. Draw a pale line between the previous hole and the next one. If the hole is on one side or the other side of the line, you should make the hole with a lean in the appropriate direction.

INSTALLING THE FENCE ON GRASS

It is possible to install the fence on the lawn. You should therefore insert a **24'' aluminium anchors** in the soil with a rubber mallet or hammer. **36'' anchors** for the gate. **Do not forget to put a piece of wood or a hockey puck on the top of the aluminium anchor so as not damage it.**

When you install a section or a part of a section, *measure the section after inserting each stake.*



▪ 24'' Aluminium ANCHOR

▪ 36'' Aluminium ANCHOR

INSTALLING THE FENCE ON A WOODEN DECK OR COMPOSITE

The holes must be at least three inches deep. **You must therefore install wood blocks under the patio every 3 feet**, where you plan to drill the holes and you must drill the entire wood.

INSTALLING THE FENCE ON A WOODEN TERRACE

When the installation is done on a wooden terrace at ground level, it is necessary to insert a **36" anchor** in order to reach the solid part of the ground so that everything is held firmly in place.

INSTALLING THE FENCE ON A PAVING STONE

When the installation is on paving stone (small paving stone or patio slab), you must install the **sleeves for paving stones 12 inches** long to find the solidity of the ground every 3 feet.

REMOVING THE CARROT AND INSERTING THE SLEEVES

After drilling the holes, remove the carrot with a pair of pliers. Insert the plastic sleeve in the hole. If the sleeve comes out, it can be wrapped with Duct tape. Put down a piece of wood or a hockey puck on the top of the sleeve and push it in the hole with a rubber sledgehammer.

Now, what remains is positioning the sections to match up the holes. You will notice that the sections are not pre-assembled with the safe latch hooks. Once all sections are assembled, enlarge the vacant hole (2nd from top) with a **5/32" metal bit**. Screw on the safe latch hooks and the eyelets in these holes.

CORNER POST

In order to avoid unnecessary cuts and losses, **we offer you** the Corner post that will facilitate and solidify the installation when you have to do a 90 ° and to offer a more aesthetic visual.

TERM POST

We also offer a Term post to avoid attaching the fence to a less accessible or unstable surface: vinyl and glass fences, stucco walls, wrought iron fences, granite, slate, stone veneer, house or shed wall or cedar hedge.

PROTECTION AND SECURITY *(For purchase, available on our website)*

Our hooks can be locked with a **padlock** to secure permanently the installation of the fence and to protect the access to your pool.

If your municipality requires a permanent fence, please note that we offer the option for the pool fence to be fixed and permanent using our **permanent anchors**.



3 1/2" (Concrete, wood)



12" (Paving stone)



CONGRATULATIONS!

You have just secured your pool with AQUAFENCE

- Keep gate and manual openings closed at all times.
- **Children should always be carefully watched at all times.**
- Periodically check fence and gate for proper function.
- The fence must block all entrances to the pool area.
- Keep fence away from staging platforms: table, chair, play structure.
- Leave room between fence and pool to allow for a walkway while fence is up.
- If fence is terminating to an existing structure make sure that the structure is strong enough and the latch can not pull out allowing a child to get through.
- AQUAFENCE is not intended to be a substitute for proper adult supervision and is not a guarantee against access to the pool.
- Layers of protection such as a fence, pool alarm, door alarm and proper adult supervision in and around your pool can help reduce unauthorized access and thus reduce the risk of drowning.
- If you are installing the fence to meet with code requirements, check your local building codes to be sure you are in compliance with local fencing laws.



AQUA
FENCE
CLÔTURES DE PISCINE